

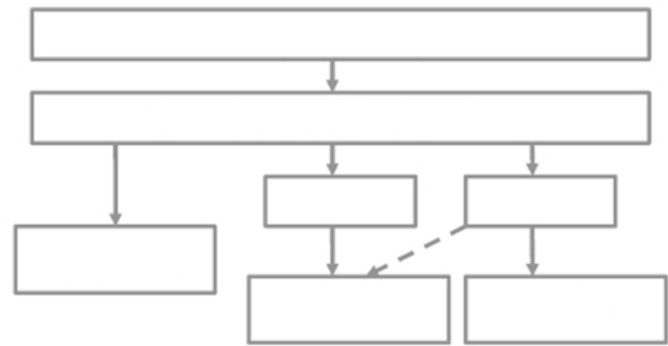
Name:
Period:

Date:

257. What does the word 'synoptic' mean?

258. Which three gospels are considered synoptic, and why?

259. Fill in the chart for the "Traditional Approach" to explaining the relationship between the synoptics, and briefly explain the problems with it.



The Traditional Approach

260. What is a gospel "harmony"? How is a harmony intended to address the problems with the synoptics? What is our earliest example of a harmony?

261. What is a "synopsis"? Who was responsible for producing the first one?

262. What is the "Synoptic Problem"?

263. What does it mean to say there is a "literary relationship" between the synoptics?

264. Explain the five specific observations that detail the literary relationship between the synoptics.

- 1.
- 2.
- 3.
- 4.

- 5.

265. What is the "Triple Tradition"? Give %ages and verses for each gospel.

266. What is the "Double Tradition"? Give %ages and verses for each gospel.

267. What %of MT was copied from MK? What %age of LK was copied from MK?

268. What %age of each gospel is material unique to that gospel?

269. Label the chart at right according to the chart on the screen.

